



Waste Water and Solid Handling Pump  
Upompe KSH Series



## KSP Series

### Back Pull Out - Self Primming

Model Available:-      **KSP 40/40**  
   **50/50**  
   **80/80**



KSP self primming design is to suit your needs, to pump clean or dirty water, Saline Water, Acidic, as well as diesel & light oils. Does not need foot valve for negative suction as it is self primming.

#### Capacity :-

- Up to 210 m<sup>3</sup>/hr
- Up to 90 M / Head
- Three (3) pump sizes

#### Design :-

- Heavy duty design for industrial application.
- Standard open Impeller
- Sealing - Mechanical Seal or Packing.

#### Standard Features :-

- Standard Mechanical Seal or Packing on request
- Universal standard connecting flanges
- Shaft - drive end is in accordance with ISO
- Vee Pulley belt driven coupled on request
- Heavy duty construction
- Heavy duty bearing cartridge
- Easy to dismantle and assemble
- Working temperature - 80°C - 120°C

#### Parts List :-

Part No.	Designation	Material	Qty	Part No.	Designation	Material	Qty
1	Casing	Stainless Steel	1	15	Adaptor Extension Ring	Cast Iron	1
2	Casing Stand	Cast Iron	1	16	Bearing Bracket	Cast Iron	1
3	Semi-Open Impeller	Stainless Steel	1	17	Oil Seal	Synthetic Rubber	2
4	Mechanical Seal	Carbon vs Ceramic	1	18	Adaptor Extension Ring Screw	Steel	4
4P	Packing	Asbestos PTFE	1	19	Oil Drain Plug	Steel	1
5	Casing Cover	Stainless Steel	1	20	Support Foot	Cast Iron	1
5P	C.Cover Packing Type	Stainless Steel	1	21	Venting Plug	Stainless Steel	1
6	Casing Cover O Ring	Synthetic Rubber	1	22	Casing Drain Plug	Stainless Steel	1
7	Deflector	Synthetic Rubber	1	23	Casing Drain Cover	Stainless Steel	1
8	Bearing cover Gasket	Asbestos Sheet	2	24	Casing Drain Cover Gasket	Synthetic Rubber	1
9	Oil Cover	Nylon	1	25	Jam Screw	Steel	4
10	Oil Gauge	Plastic Threaded	1	26	Casing Screw	Steel	4
11	Bearing	Steel	2	37	Stud / Nut	Stainless Steel	2
12	Shaft	Stainless Steel	1	38	Bearing Cover Screw	Steel	6
12s	Shaft Sleeve	Stainless Steel	1	29	Clearance Adjusting Screw	Steel	4
13	Shaft End Key	Stainless Steel	1	30	Support Foot Screw / Washer	Steel	1
14	Bearing Cover	Cast Iron	2	31	Casing Drain Cover Screw	Stainless Steel	4

#### Pump End Material Configuration

- Stainless Steel as standard
- Cast iron, CA 15 & CA 40 on request

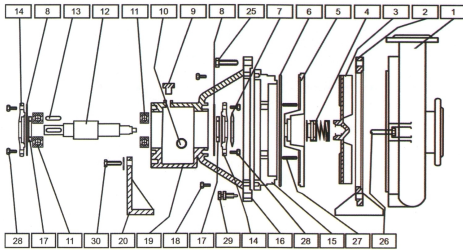
#### Mechanical Seal Materials

- Carbon vs Ceramic / Viton
- Silicon Carbide vs Silicon Carbide / Viton
- Tungsten Carbide vs Tungsten Carbide / Viton

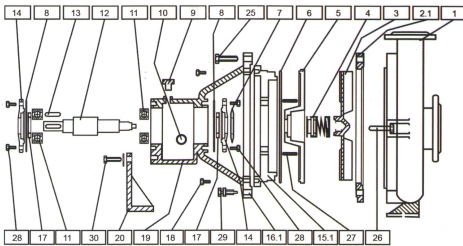
#### Code :

- CA / CE / VT
- SIC / SIC / VT
- TC / TC / VT

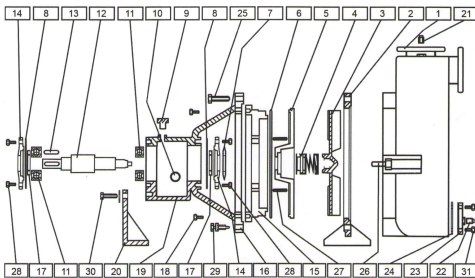
## XE/XEN/XEH Pump Parts List



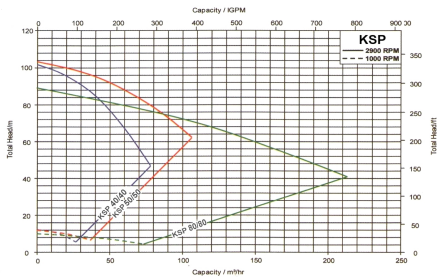
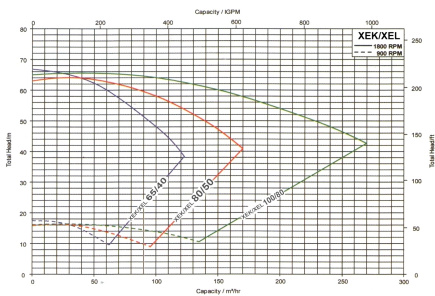
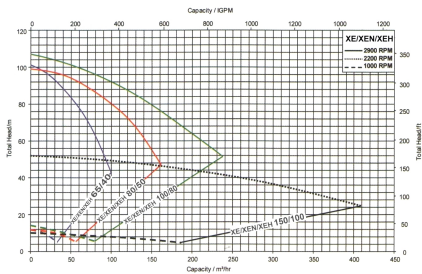
## XEK/XEL Pump Parts List



## KSP Pump Parts List







- Curves Based On Full Size Impeller for each model.
- Curve for reference only ,for final selection refer to Individual pump curve.