

## WAFER TYPE BUTTERFLY VALVE

### SPECIFICATION

FOR JIS B2239 10K / 16K FLANGE MOUNTING  
FACE-TO-FACE DIMENSION TO ISO 5752 / BS 5155 / BS EN 593  
LEVER / WORM GEAR OPERATOR

### PRESSURE / TEMPERATURE RATINGS

Working Pressure	1.6 Mpa
Testing Pressure	Shell : 2.4 Mpa Seat : 1.76 Mpa
Working Temperature	-20°C to 110°C (EPDM Seat) -10°C to 80°C (NBR Seat)
Suitable Media	Water, Oil & Gas

### MATERIALS

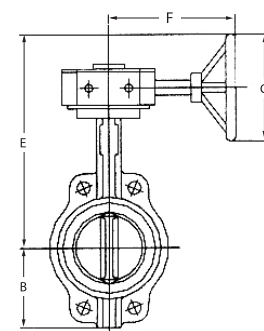
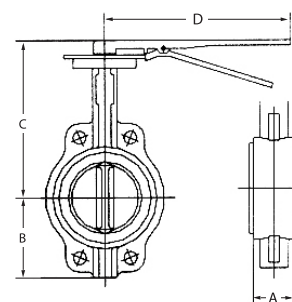
Part	Material	JIS
Body	Cast Iron	FC 25
	Ductile Iron	FCD 40
Disc	Ductile Iron	FCD 40
	Aluminum Bronze	ALBC 2
	Stainless Steel 304	SCS 13
	Stainless Steel 316	SCS 14
Seat Ring	EPDM	
	NBR	
	PTFE	
	Viton	
Shaft	Stainless Steel 410	SUS 410
	Stainless Steel 431	SUS 431
	Stainless Steel 316	SUS 316
	Taper Pins	Stainless Steel 316
Key	Carbon Steel	
O-Ring	NBR	
Bushing	PTFE (DN50~600)	
	Luberized Bronze (DN50~1000)	

### DIMENSIONS

Size	A	B	C	D	E	F	G	Cv
mm	mm	mm	mm	mm	mm	mm	mm	90°
50	42	80	195	267	272	173	150	135
65	45	89	208	267	287	173	150	220
80	45	97	213	267	292	173	150	302
100	52	114	234	267	310	173	150	600
125	54	127	246	267	325	173	150	1022
150	56	140	259	267	338	173	150	1579
200	61	175	305	358	452	239	302	3136
250	66	203	338	358	485	239	302	5340
300	77	244	381	358	526	226	302	8250
350	77	269	-	-	556	226	302	11917

**BFV-WJ**

**16K**  
DN50~350



## WAFER TYPE BUTTERFLY VALVE

### SPECIFICATION

DOUBLE-STAGE WORM GEAR OPERATOR

### PRESSURE / TEMPERATURE RATINGS

Working Pressure	1.6 Mpa (DN400~600) 1.0 Mpa (DN700~1000)
Testing Pressure	Shell : 2.4 Mpa (DN400~600) 1.5 Mpa (DN700~1000) Seat : 1.76 Mpa (DN400~600) 1.1 Mpa (DN700~1000)
Working Temperature	-20°C to 110°C (EPDM Seat) -10°C to 80°C (NBR Seat)
Suitable Media	Water, Oil & Gas

### DIMENSIONS

Size mm	A mm	B mm	Double-Stage Worm Gear Operator						Cv 90°
			C mm	D mm	E mm	F mm	G mm	H mm	
400	87/102	318	686	104	328	104	279	302	16388
450	106/114	333	709	104	328	104	279	302	21705
500	132	371	767	142	328	145	305	302	27908
550	151	435	823	142	270	145	305	302	34048
600	152	556	851	142	394	145	305	391	43116
700	165	625	1011	173	457	173	358	424	49500
800	190	607	1046	173	457	173	358	424	68250
850	203	607	1112	173	457	173	358	424	77123
900	205	655	1196	201	480	203	409	424	86375
1000	218	718	1275	201	480	203	409	424	119750

Note:

1. Actuator mounting flange conforms to ISO 5211 drilling.
2. The butterfly valve can be supplied with electric or pneumatic actuator.
3. Pneumatic actuators are available in spring return or double acting.
4. Micro switch / limit switch box are available upon request.
5. Other flange standards available upon request.
6. If used for gas application, please consult our sales office.
7. Design and specifications are subject to change without prior notice.

**BFV-WJ**

**16K**

DN400~600

**10K**

DN700~1000

