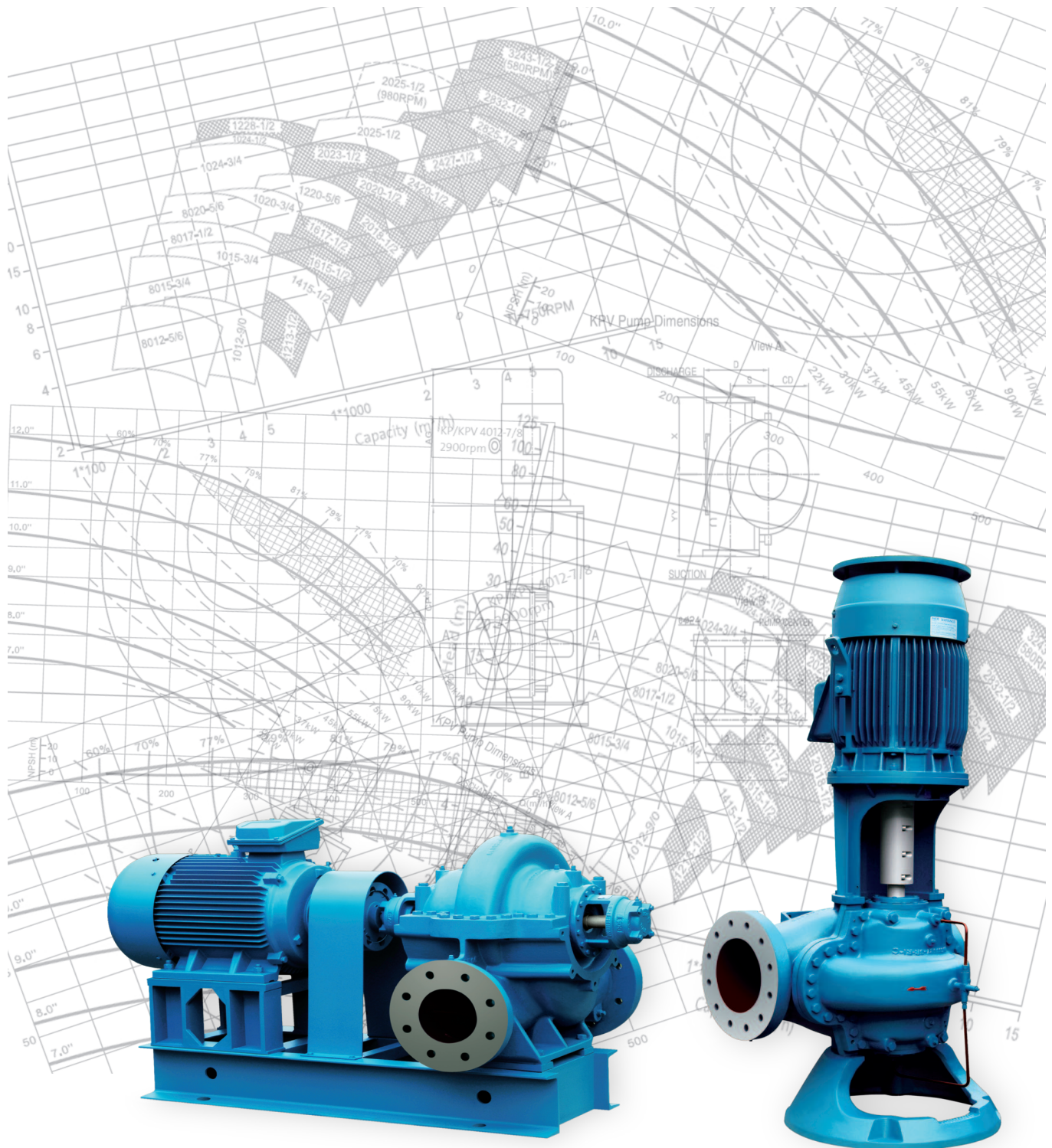


KP, KPV Horizontal & Vertical Double Suction Split Case Pump



DOUBLE SUCTION SPLIT CASE PUMPS

PACO's experience plus the commitment to quality and an aggressive research and development programme, has produced an energy efficient, longer lasting double suction split case pump with emphasis on ease of maintenance and installation.

PACO's type KP is available in both horizontal and vertically mounted configurations.

Pump Model: KP, KPV

Technical Specifications

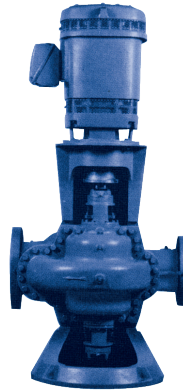
- › Capacities up to 8000 m³/h for 50 Hz
- › Heads up to 230 metres for 50 Hz
- › Maximum operating pressure of 12 or 16 bar (25 bar upon request)
- › Suction/ Discharge Diameter: 50 - 350 mm
- › Max Kilowatt: 1250 kW
- › ANSI Flange connection
- › Standard direction of rotation is clockwise viewed from driving end. Anti-clockwise viewed from driving end is optional

Working Conditions

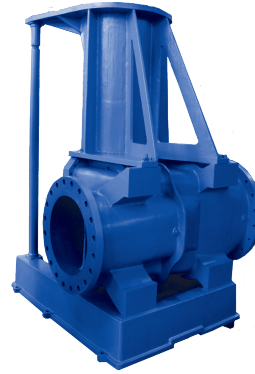
- › Temperature standard for medium is 0 - 100°C (-20 - 135°C under special conditions & upon request)
- › Transfer clean water without particles

Applications

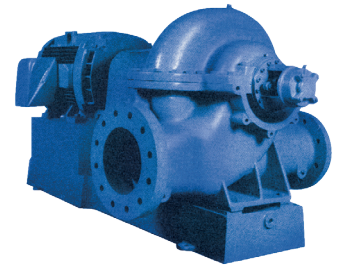
- › Chilled water
- › Condensate water
- › Commercial pools and water parks
- › Direct and indirect cooling water
- › Service water
- › Water distribution systems



KPV



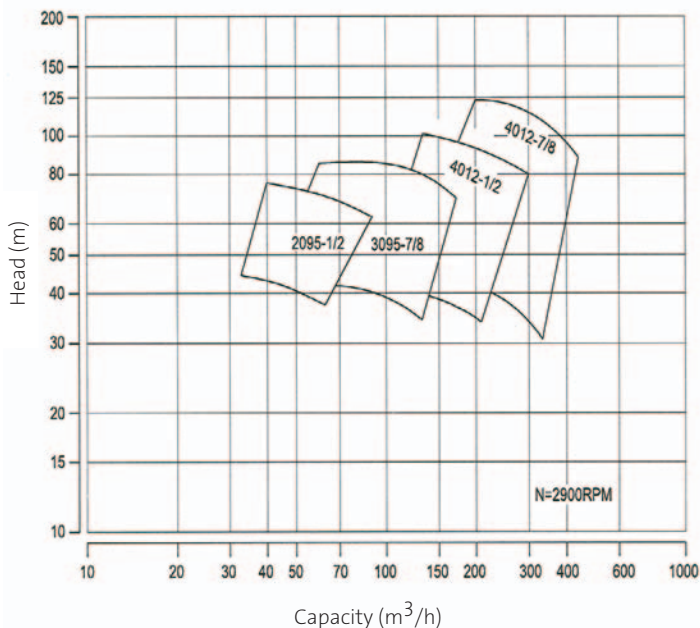
KP



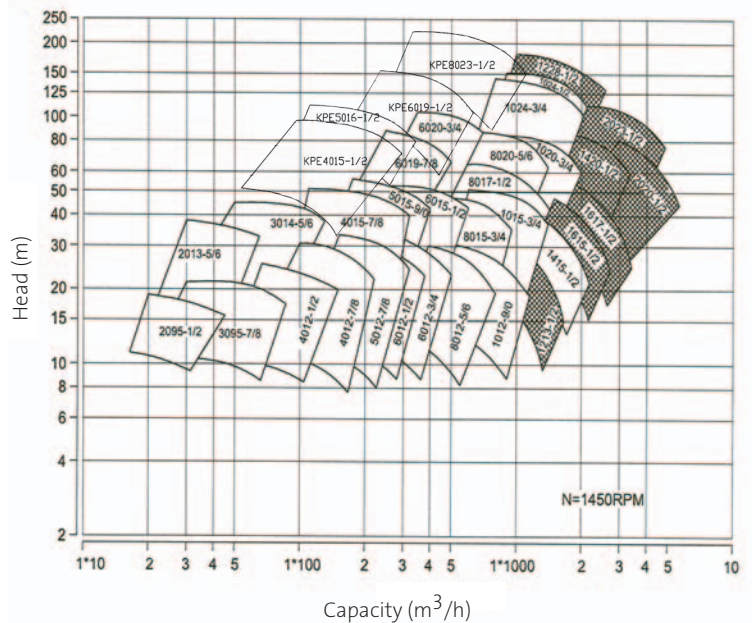
Standard Material of Construction:

- Pump Casing : Cast Iron
- Impeller : Stainless steel 304
- Wear Ring : Bronze
- Shaft : Stainless steel 420
- Sealing : Mechanical Seal

PACO KP Family Chart - 2900rpm



PACO KP Family Chart - 1450rpm



FEATURES & BENEFITS

1. SHAFT SLEEVES

FEATURE: Replaceable shaft sleeves are available in a wide variety of metallurgies
BENEFITS: Protect the shaft against corrosion and wear

2. SHAFT SEALING

FEATURE: Pumps are available in a variety of mechanical seals of packing configurations

3. IMPELLERS

FEATURES: Hydraulically and dynamically balanced double suction Francis Vane type impellers
BENEFITS: The hydraulic matching of casing and impeller reduces turbulence and recirculation, ensuring high efficiency and quiet performance over the entire range of operation

4. SUCTION BAFFLES

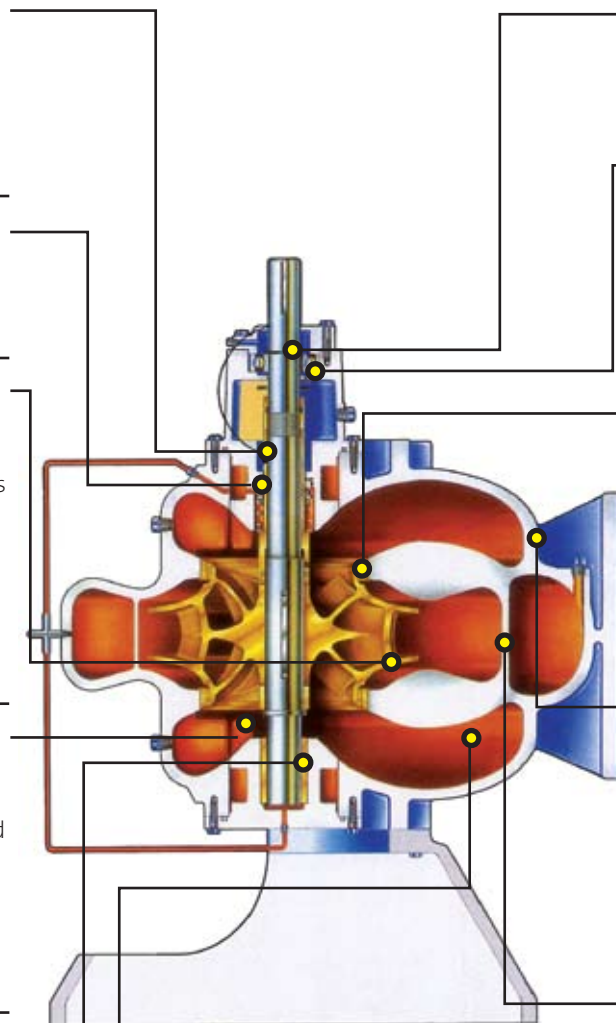
FEATURES: Unique integrally cast suction baffles direct flow into the impeller eye. Inlet flow is accelerated gradually, suppressing the tendency toward velocity distortion
BENEFITS: Ensure even suction distribution and insuring quiet vibration-free operation

5. BEARING HOUSING

FEATURE: Bearing housing designed with Seal-less Internal Lower Water Lubricated Sleeve Bearing
BENEFIT: This ensures no risk of seal leakage at lower shaft end

6. SUCTION CHAMBERS

FEATURES: Suction inlet configuration incorporates precise geometric design
BENEFITS: Increasing hydraulic efficiency and lowering net positive suction head requirements



7. SHAFT

FEATURE: Large diameter precision ground shaft
BENEFIT: Minimizes vibration

8. BEARINGS

FEATURE: High Thrust Bearings are selected in conjunction with shaft bearing span and large diameter shaft
BENEFIT: Provides a minimum of 50,000 hour (B-10) life

9. CASE WEAR RINGS

FEATURES: Replaceable case wear rings protect pump casing from wear and permit simple maintenance of proper running clearances
BENEFITS: To reduce maintenance costs and maintain high operating efficiency

10. CASING

FEATURE: Suction and discharge flanges are integrally cast into the lower casing half.
BENEFITS: This allows for removal of the rotating assembly without disturbing connected piping. Casing is foot mounted to reduce vibration

11. VOLUTE

FEATURES: The compensated dual volute design virtually eliminates radial forces acting against the shaft, exceeding seal and bearing life. Double volute construction is available on selected pumps ranging above 4" discharge
BENEFITS: The double volute design improves efficiency by providing two individual volute passageway to guide the flow in the casing. This casing feature extends seal and bearing life, minimises vibration and provides quiet operation

PACO's experience, plus their commitment to quality and an aggressive research and development programme, has produced the finest premium efficient pumps in the industry. Using computer aided design technology, PACO has developed pumps producing operating high efficiencies, thereby reducing operating costs and saving money. The innovative impeller and pump design produces a higher operating condition efficiency and provides a wider band of best efficiency. As a result, low operating costs are ensured even during off design operating conditions.

HVAC PIPING ACCESSORIES



PSD (Suction diffuser)

Features:

- Eliminates need for 90° elbow, stainer, flow stabilizer and reducer
- Simplifies pump installation
- Minimizes costs
- Promotes smooth, even flow profile
- Stainless-steel strainer
- Size 2" to 16"
- 125# ANSI flanges
- Standard working pressure: 175 psi (non standard psi rating available upon request)



CBS (Combination valve)

Features:

- Functions as check valve, shutoff valve and balance valve
- Simplifies pump installation
- Minimizes costs
- Promotes smooth, even flow profile
- Spring-loaded bronze disc minimizes chatter
- Vertical or horizontal orientation
- Size 2" to 12"
- 125# ANSI flanges
- Standard working pressure: 175psi (non standard psi rating available upon request)

AFTER SALES, PARTS AND SERVICE

Grundfos Pumps Sdn Bhd is committed to After Sales Service. Highly trained technicians can assist customers with initial start-up, troubleshooting, service and repair.

Our technicians can evaluate your system's energy usage with the pumping systems assessment tools and provide recommendations for the engineers and facility operators.

Genuine PACO parts are pre-engineered and pre-packaged to simplify selection, ordering, and stocking. Virtually all required parts for PACO products are available as kits.

*Optional Offer: Laser Alignment at site by Grundfos Pumps Sdn Bhd



GRUNDFOS PUMPS SDN BHD (202527-A)

7, Jalan Peguam U1/25
Glenmarie Industrial Park
40150 Shah Alam, Selangor,
Malaysia.

Tel : +603-5569 2922
Fax : +603-5569 2866

E-mail: gfosmy1@grundfos.com



Cert No.: KLR0402930

Branch Office
Northern & East Coast
10, Ground Floor,
Jalan Todak 4, Bandar Sunway,
13700 Seberang Jaya,
Penang
Tel : +604-818 3779
Fax : +604-818 3848

East Malaysia
Lot 8, Lorong Industri Warisan 1,
Taman Industri Warisan Indah,
Mile 7, Old Tuaran Road
88450 Inanam, Kota Kinabalu,
Sabah
Tel : +6088-380 663/-383 663
Fax : +6088-383 621